



▶ LABORATORY MIXERS





BODEN
SOILS

ASPHALT
BITUMINOUS
MATERIALS

BETON
CONCRETE

20-0160

Laboratory Mixer 30L

EN 12697/35 - ASTM D 1559 for the preparation of bituminous material mixture samples. The cover with sealing is equipped with an electric spindle motor to open and close. A window permits to watch the mixing process inside. This window can be replaced by the optional available funnel to input liquid or additives during the mixing process part #20-0160E10.

In addition the cover is provided with connection plugs for gas etc. The constant speed motorized stainless steel mixing drum is equipped with switch to turn left or right (mixing principle synchronised or in counter direction). An electric heating installation at the bottom and walls with PID regulator provides a constant temperature.

For unloading the mixing bowl can be tilted to the front by the installed motor system. The special mixing tool with electric motor and variable speed range is optimized for mixing asphalt samples in smaller and larger quantities.



Part# 20-0160E10

Specification:

Drum contents	30 l
Max. drum load	max. 60 kg
Mixing tool speed	25...60 1/min
Mixing drum temperature	25...250° C
Dim. appr.	1015 x 1015 x 1490 mm
Weight appr.	465 kg
240V, 60 Hz, 12 kW	



Part# 20-0162

20-0162

Torque measuring option

The mixing energy can be determined per measurement of the needed amount of active current. Data transfer via USB.

20-0170

Laboratory mixer 75 L with max. drum load of 150 kg





ZEMENT
CONCRETE

ZUSCHLAGSTOFF
AGGREGATES

PRÜFEN
TESTING

SIEBEN
SIEVING

BOHREN
DRILLING

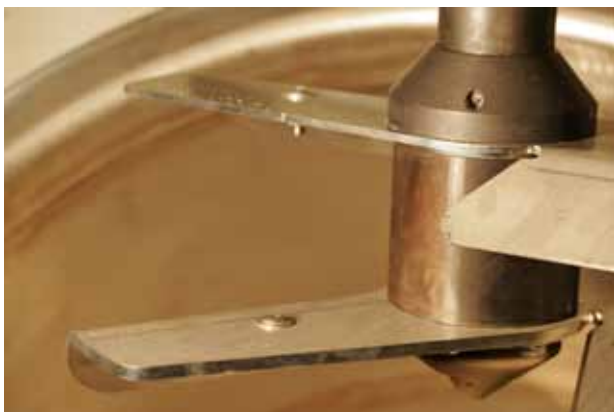
LABORCONTAINER/
EINRICHTUNGEN
LABORATORY CONTAINER/
FACILITIES



Mixing drum ready for filling with material



Mixing drum tilted to empty mix



Details of special mixing tool: with extrusion cone

▶ LAB MIXER 15kg



20-0150 Laboratory mixer 4 – 15 kg for the preparation of mastic and rolled asphalt mixtures up to a max. grain size of approx. 32 mm. Includes removable stainless steel mixing bowl, exchangeable mixing tool, electrical movement of mixing bowl in mixing and removal position, torque measurement of the mixing tool with load cell, display and adjustment of mixing parameters (duration, temperature, speed,) via touch screen, interval mixing function for heating process, temperature measurement in the asphalt and on the outside of the mixing bowl.

Additional mixing bowls 20-0150E10 available.

Technical data:

Mixing quantity: 4-15kg

Mixing speed: 30 - 38 rpm

Mixing bowl temperature: 25 - 260°C

Additional Information:

Electrical specifications

400 V, 50/60 Hz, 3 P+N+PE, 3.1 kW

Dimensions approx: 1100x935x1700 mm

Weight approx: 380 kg

Other Testing Equipment Available

20-2572

Rolling Thin Film Oven RTFOT



35-5100

Universal Testing Machine 200 kN



42-0600

Los Angeles Abrasion Test-Machine



infraTest Prüftechnik GmbH

Wiesenbachstraße 15

D-74336 Brackenheim-Botenheim

Tel.: +49 (0) 7135-95 00-0

Fax: + 49 (0) 7135-95 00-20

info@infraTest.net

www.infraTest.net